

Chuck Close Portrait Unit

Mon 5/16/2016

Essential Question:

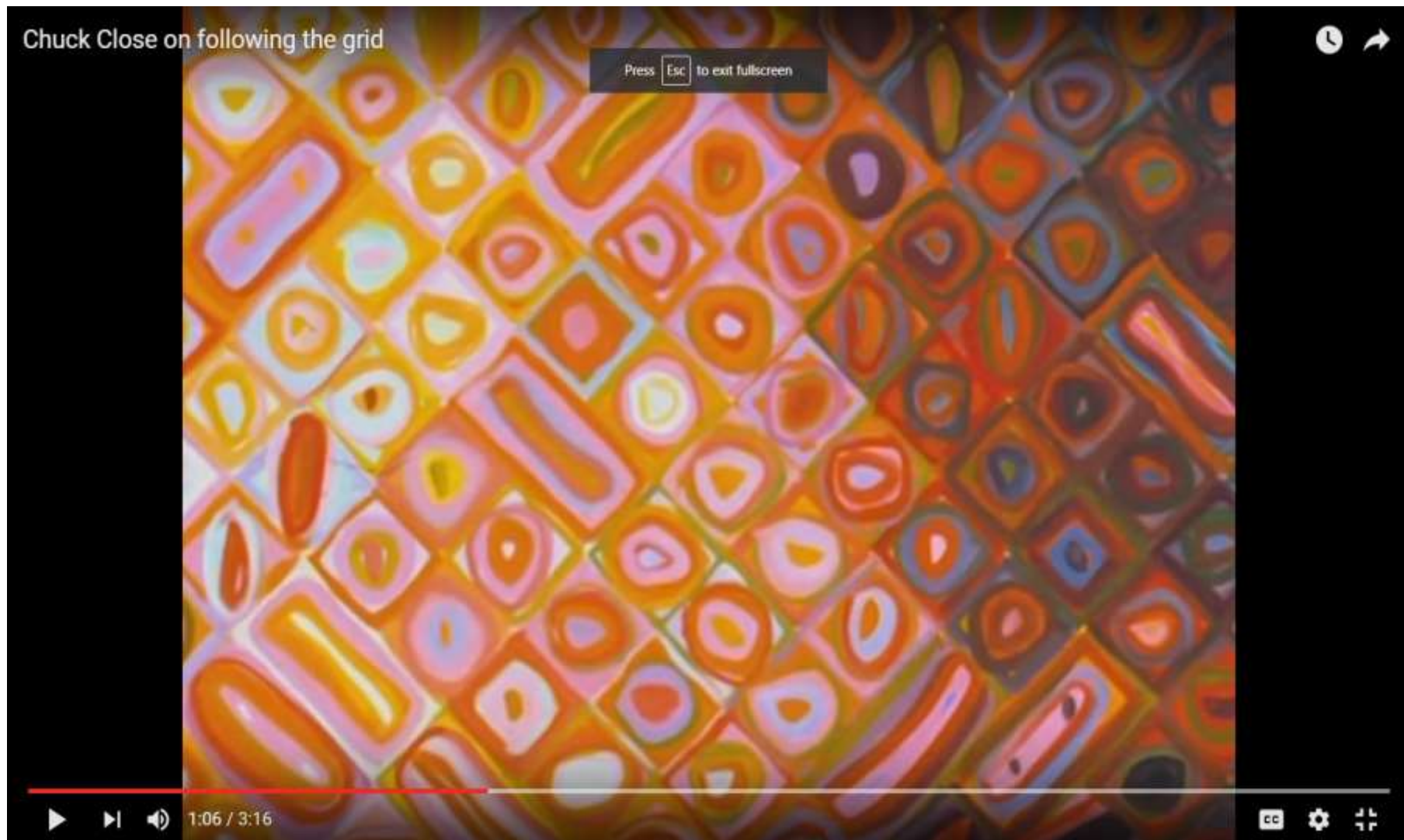
How and why does Chuck Close make his style of portrait art?

EQ: Explain Why Chuck Close is confined to a wheel chair.



<https://www.youtube.com/watch?v=TIwCC6bIDDs>

EQ: Why does Chuck Close use a GRID method for his artwork?



<https://www.youtube.com/watch?v=e-p5M0vhZI>

EQ: What advice does Chuck Close offer himself advice about his learning disabilities?



CBS This Morning - Artist Chuck Close writes note to younger self

<https://www.youtube.com/watch?v=milXH-433vs>

Chuck Close Portrait Unit

Tue 5/17/2016

Essential Question:

What are the different types of printmaking and art making that are used by Chuck Close?

Printmaking

Printmaking is the process of making multiples of the same artworks by printing, normally on paper.

3 main types

- Relief
- Intaglio
- Lithography

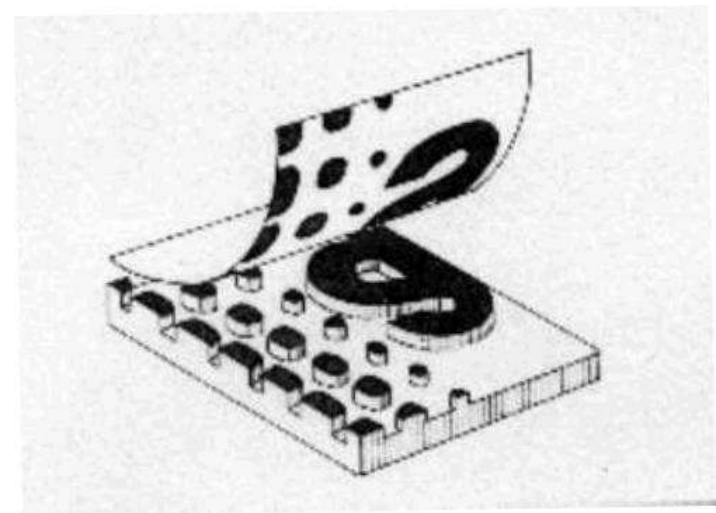


<https://www.khanacademy.org/humanities/art-history-basics/artists-materials-techniques/printmaking/v/moma-printmaking-01>

Relief Printmaking:

Relief printing is a process where a piece of wood, linoleum (lino), rubber or other material is carved away. The raised surfaces of the **printing** plate or block are inked; carved away areas are ink free.

Printing the image is therefore a relatively simple matter of inking the face of the printing block and bringing it in firm contact with the paper.



Reduction Linocut:

A type of relief **printing**, using multiple colors, in which the separate colors **printed** from the same block at different stages.

Linocut refers to using linoleum as the printing block.



ukiyo-e Woodcut:

A type of relief **printing**, created in Japan in the 18th century. The printing block is made by carving on wood.



Intaglio Printmaking:

Intaglio is the type of **printmaking** techniques in which the image is marked into a surface, and the marked line or sunken area holds the ink.

It is the direct opposite of a relief print.



Intaglio process explained in conjunction with Chuck Close Prints exhibition



<https://www.youtube.com/watch?v=juhckjGvmeA>

Mezzotint:

A type of intaglio print made from an engraved copper or steel plate on which the surface has been partially roughened, for shading, and partially scraped smooth, giving light areas.

The technique was much used in the 17th, 18th, and early 19th centuries for the reproduction of paintings.



Lithography Printmaking:

Lithography is a method of **printing** originally based on the idea that oil and water will not mix. The **printing** is from a stone or a metal plate with a smooth surface.



Lithography process explained in conjunction with Chuck Close Prints exhibition



<https://www.youtube.com/watch?v=NeluYLaw9ks>

Silkscreen Printmaking:

A printmaking technique in which a mesh cloth is stretched over a heavy wooden frame and the design, painted on the screen or affixed by stencil, is **printed** by having a squeegee force color through the pores of the material in areas not blocked out.



Jacquard tapestry:

A Tapestry is a picture woven into cloth.
It is woven by hand on a weaving-loom.



Paper Pulp:

A soft wet mixture of cellulose fibers from wood or paper.



Demonstration of Chuck Close's pulp paper process



<https://www.youtube.com/watch?v=IZttkbmtqKo>

Chuck Close Portrait Unit

Wed 5/18/2016

Essential Question:

How do I behave in a Museum?

Getting to Know Chuck Close's Portraits.

Your Museum Visit



<https://www.youtube.com/watch?v=T3G85Umn4Js>

Conversations with Art

Look And Guess: spend some time looking at your postcard.

1. **What do you see?** Write a list of your “first impressions.”
2. **Guess** which printmaking/art method Chuck Close used for this artwork.

Pretend:

3. **WHO am I?** Pretend you are the person in the picture... write about them in the first person. Describe their life, goals, interests, job and other characteristics. Use first person “I am...”

4. **Be the Artist:** Pretend you are the artist, write a short journal entry about making this work of art. How did you make this and how satisfied with the art are you feeling?

Conversations with Art

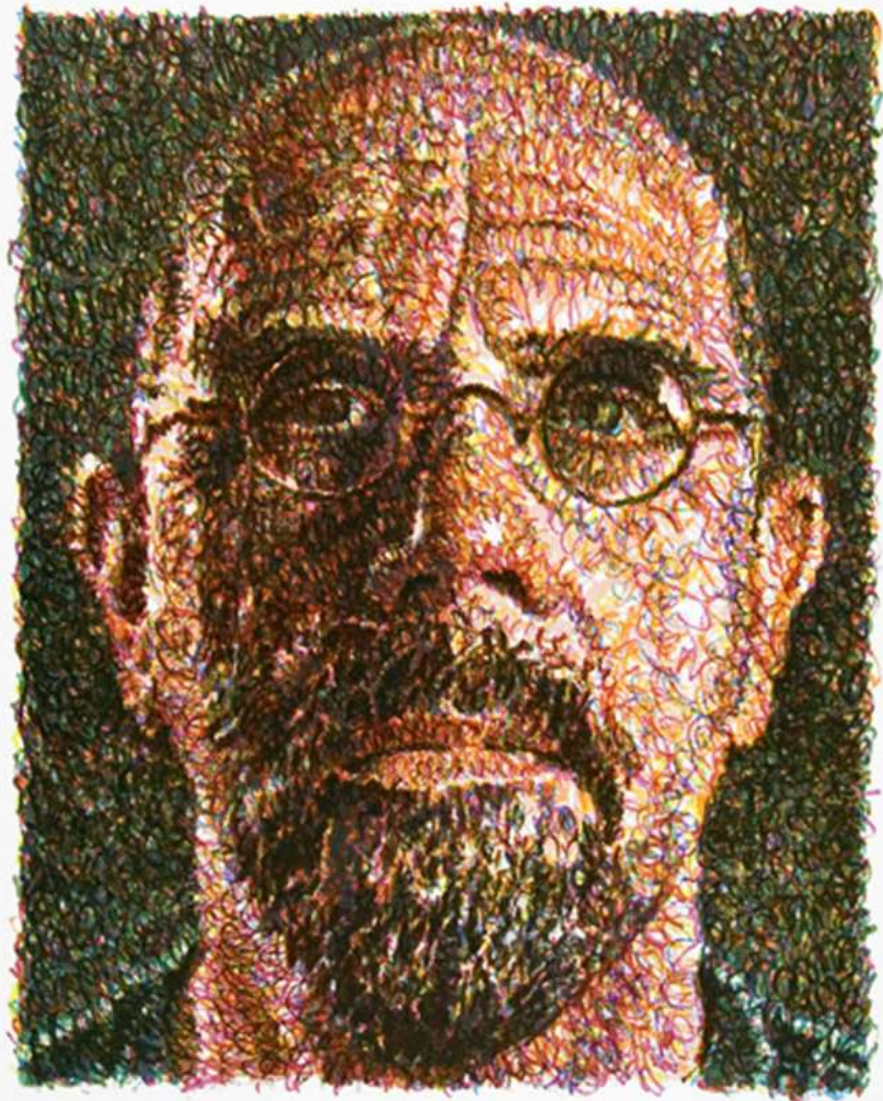
How does artwork speak to you?

Share:

- Meet with the person that have the same artwork as you.
- Share your ideas about the art with them.
- Be ready to share with the FULL class.

Find:

- At the museum tomorrow, find the art and READ the info card about it.
- Notice how looking at the REAL art is different than a tiny postcard... what can you see NOW that you didn't see before?
- Be ready to share what you learned on Friday.

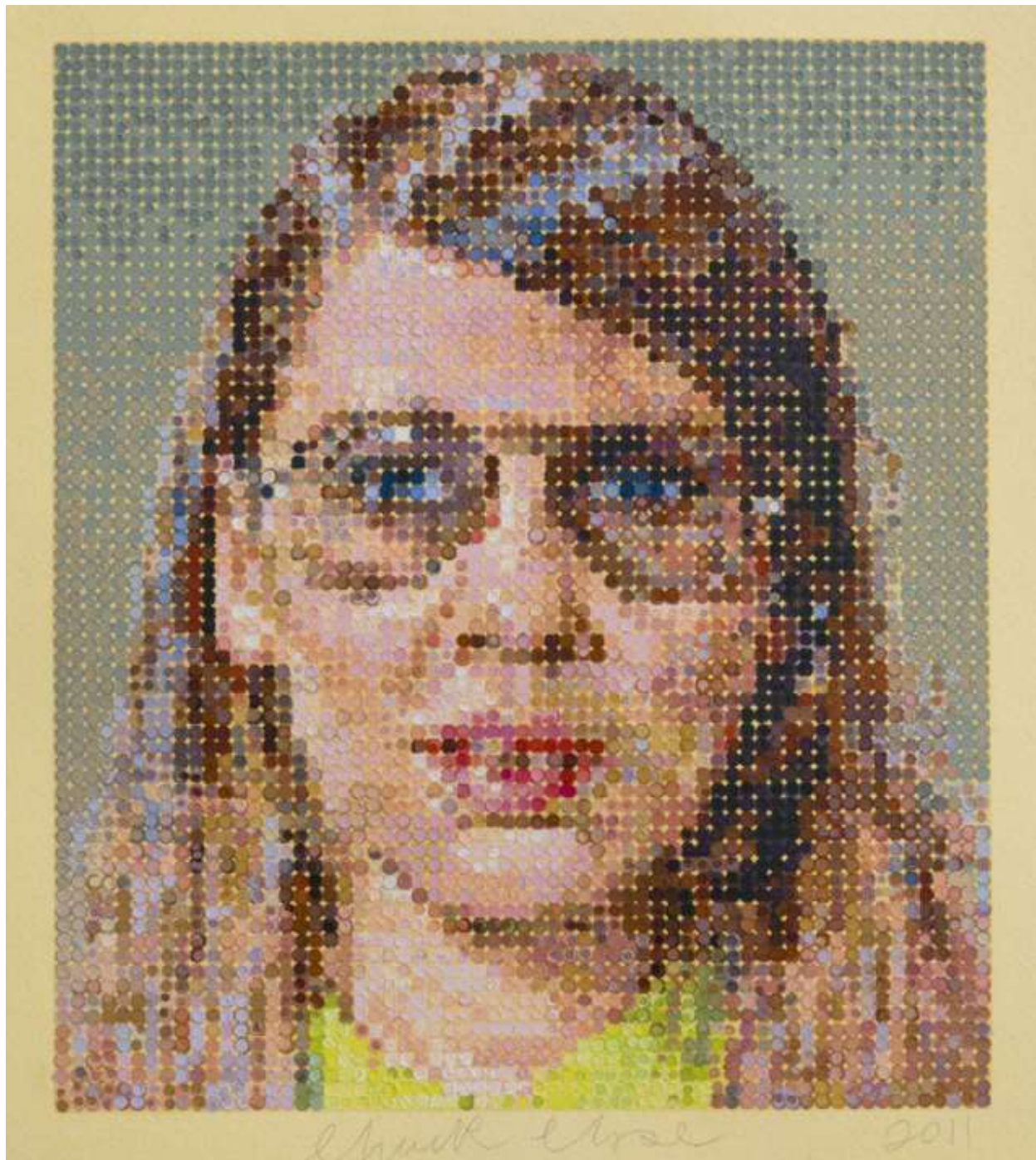


22/1/09 *Frank Opre* 2007

2



3



4

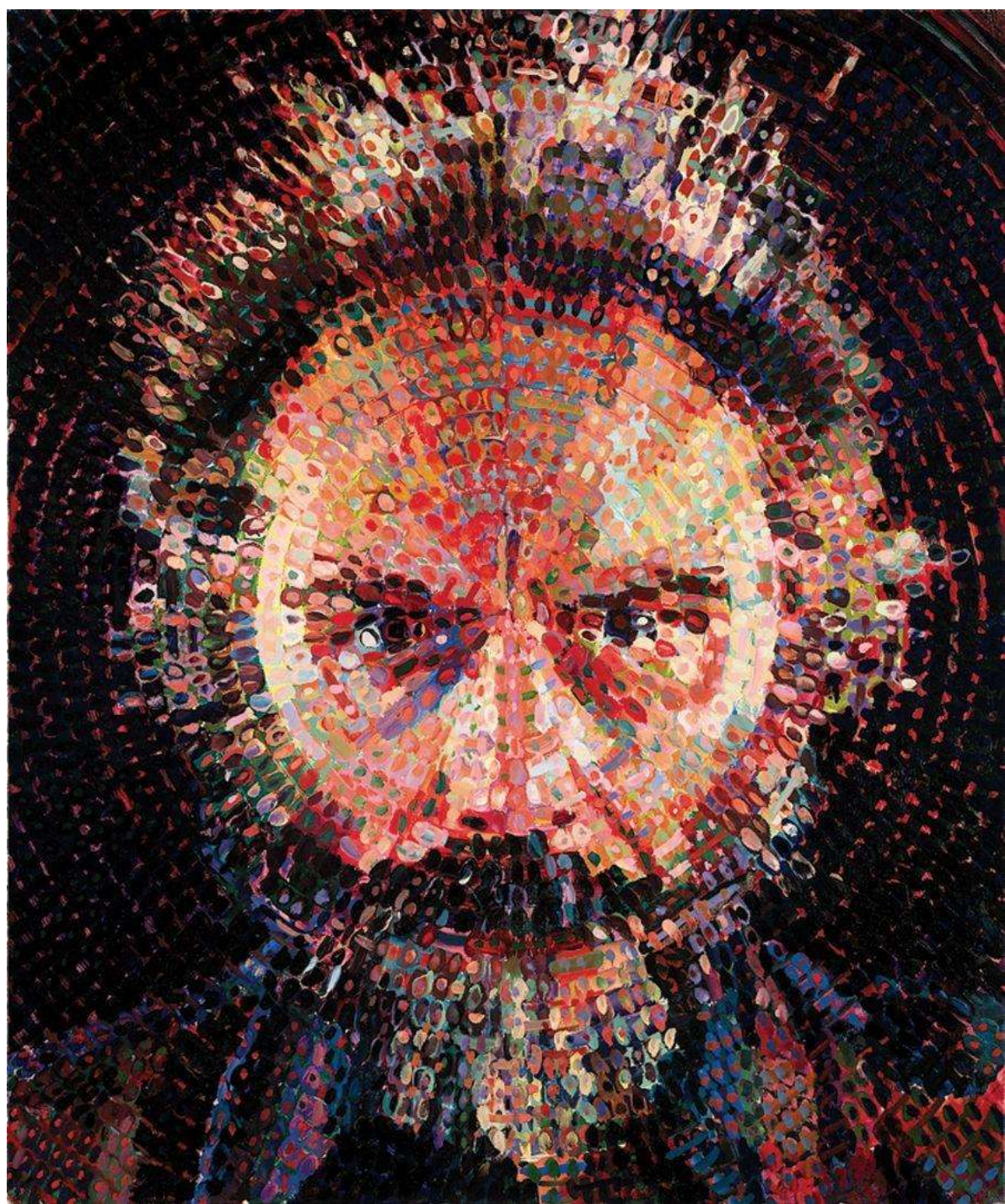


5



Chuck Jones

2011



Chuck Close Portrait Unit

THUR 5/19/2016

For those NOT going on Field trip

Essential Question:

How would Chuck Close answer questions about his life and work in an interview?

Chuck Close Interview

- Use the article to find facts about Chuck Close.
- Write a fake interview (as if YOU worked for a news show.)
- Write AND Answer 3 questions about his life and 3 (or more questions) about his artwork.

Chuck Close Portrait Unit

Fri 5/20/2016

Essential Question:

What new things have I learned about Chuck Close and Printmaking?

WENT ON FIELD TRIP?

- Complete the teacher portrait request choice form (EXIT TICKET)
- Do the field trip reflection assignment.
- Finished? Read a book or draw silently in your sketchbook

DIDN'T GO ON THE TRIP?

- Complete the teacher portrait request choice form (EXIT TICKET)
- Finish your interview with Chuck Close
- Finished? Read a book or draw silently in your sketchbook

Chuck Close

Portrait Unit Choices

Table 1 Drawing GRID FACE (8 MAX)

Table 2 Collage FACE (5 MAX)

Table 3 Printmaking FACE (6 MAX)

Table 4 Painting (6 MAX)

Table 5 Group Grid FACE (6 MAX)

Table 6 Sculpture (4 MAX) 2 partners

Computers Photoshop FACE (5 MAX)

Fiber Weaving FACE (3 MAX)

Drawing Table 1

Chuck Close Grid with COLOR



Drawing Table 1

Realistic Grid with shading pencils



Collage Table 2

Collage Grid paper Face



Printmaking Table 3

Beginner: Large Styrofoam Face with stamp grid background



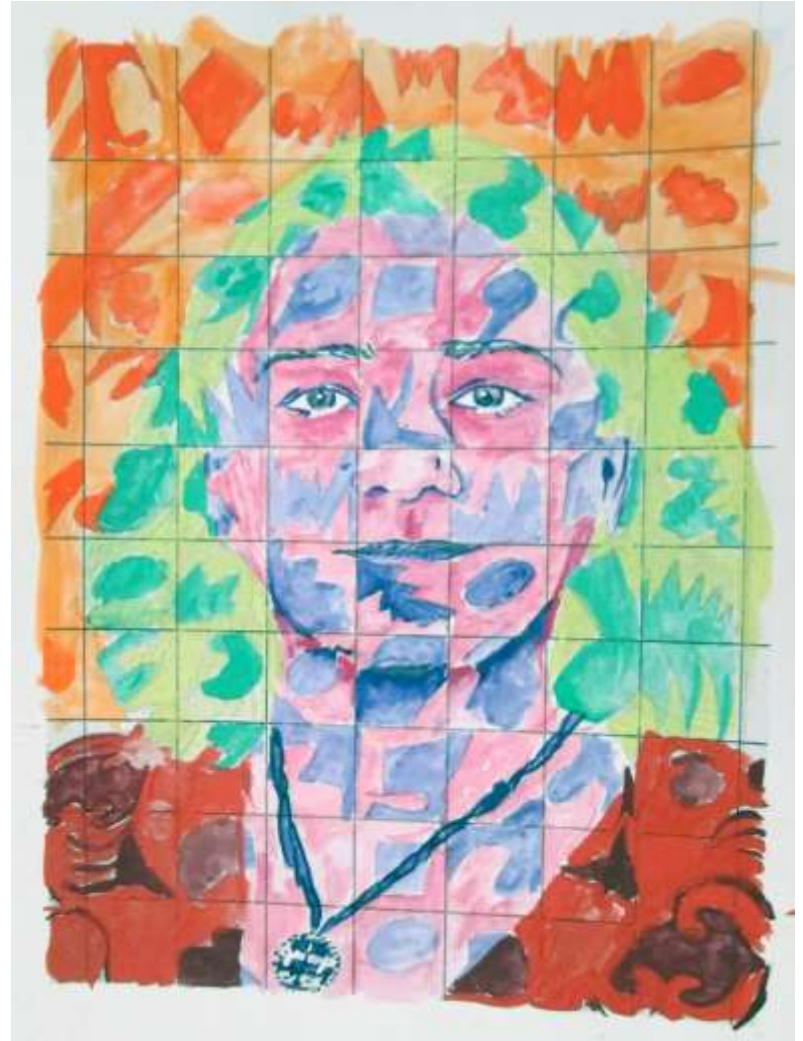
Printmaking Table 3

Advanced: Small Carved Face



Painting Table 4

Beginner: Chuck Close
Style Individual Grid
Faces



Painting Table 5

Chuck Close Style GIANT Grid Faces



Chuck Close
by
Wendell Thomas
High School Art Students



Sculpture Table 6

Work with a partner on a BIG “relief” style head.



Computers

Using Photoshop



Fiber

Weave a face with yarn on a cardboard loom.



Grading

Does it look like a FACE?

Is it recognizable as the teacher?

Does it have a GRID element?

Does it remind you of Chuck Close's artwork style?

Chuck Close: A Portrait in Progress

Press **Esc** to exit fullscreen



▶ | 🔊 17:40 / 57:24



<https://www.youtube.com/watch?v=hRfe1skdQfA>

Museums Rule!



<https://www.youtube.com/watch?v=AozRXE2ssyM>