

Classroom Jobs

Classroom Jobs change every **5 weeks**. You must apply to get a classroom job. You will keep your job as long as you do it well.

You will be replaced if necessary.

Errand Runner	<ul style="list-style-type: none"> ⇒ Takes messages to the office, nurse, counseling or library as needed. ⇒ Does not wander to places that are not part of the errand. ⇒ Works quickly to avoid missing class time. 	1
		2
		3
		4
		5
		6
		7
Paper Distributor	<ul style="list-style-type: none"> ⇒ Passes back graded papers to correct students ⇒ Passes out new worksheets or handouts 	1
		2
		3
		4
		5
		6
		7
Light Controller	<ul style="list-style-type: none"> ⇒ Turns overhead lights on and off as needed for slide shows and movies ⇒ Sits near light during these lessons 	1
		2
		3
		4
		5
		6
		7
TECH Manager	<ul style="list-style-type: none"> ⇒ Learns how to operate VCR, Projector and Document camera to assist a Guest Teacher IF NECESSARY during Ms. Gaub's absence. 	1
		2
		3
		4
		5
		6
		7
Class Photographer	<ul style="list-style-type: none"> ⇒ Takes pictures of students WORKING and artwork in progress. ⇒ Does not waste time taking goof pictures of friends. ⇒ Does not take pictures of students that do not want to be photographed. ⇒ Handles the camera carefully and responsibly 	1
		2
		3
		4
		5
		6
		7

Spill Crew	<ul style="list-style-type: none"> ⇒ Quickly and calmly handles clean up of any spills of paint, water, or other Wet and Dry supplies. ⇒ Uses broom carefully ⇒ Requests mop if necessary and mops area 	1
		2
		3
		4
		5
		6
		7
Recycling Chief	<ul style="list-style-type: none"> ⇒ Takes out recycling bin when full ⇒ Reminds students to recycle whenever possible ⇒ Does not wander to places that are not part of the errand. ⇒ Works quickly to avoid missing class time. 	1
		2
		3
		4
		5
		6
		7
Nurse Buddy	<ul style="list-style-type: none"> ⇒ Helps injured or sick student ⇒ Only goes if students request assistance and teacher feels it is necessary 	1
		2
		3
		4
		5
		6
		7
Sink Spotter	<ul style="list-style-type: none"> ⇒ Checks all 3 sinks at the end of each studio day to ensure that no mess have been left ⇒ Cleans and properly puts away anything that was abandoned in a sink ⇒ Notifies teacher of sink back-ups or problems ⇒ Washes inside of sink and wipes away water and mess from counters around sink ⇒ Replaces paper towels when needed 	1
		2
		3
		4
		5
		6
		7
Safety Leader	<ul style="list-style-type: none"> ⇒ Shuts blinds for a lock-down ⇒ Line leader for evacuations ⇒ Check stock of Band-Aids and reports to teacher when low. 	1
		2
		3
		4
		5
		6
		7



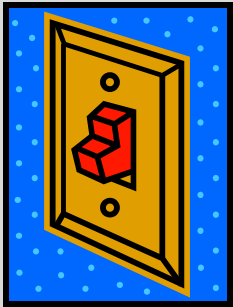
Errand Runner

- ⇒ Takes messages to the office, nurse, counseling or library as needed.
- ⇒ Does not wander to places that are not part of the errand.
- ⇒ Works quickly to avoid missing class time.



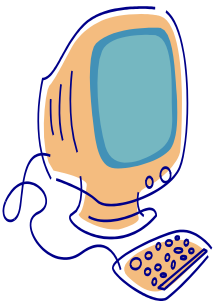
Paper Distributor

- ⇒ Passes back graded papers to correct students
- ⇒ Passes out new worksheets or handouts



Light Controller

- ⇒ Turns overhead lights on and off as needed for slide shows and movies
- ⇒ Sits near light during these lessons



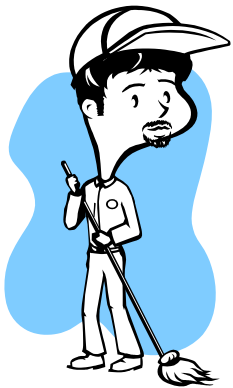
TECH Manager

- ⇒ Learns how to operate VCR, Projector and Document camera to assist a Guest Teacher IF NECESSARY during Ms. Gaub's absence.



Class Photographer

- ⇒ Takes pictures of students WORKING and artwork in progress.
- ⇒ Does not waste time taking goof pictures of friends.
- ⇒ Does not take pictures of students that do not want to be photographed.



Spill Crew

- ⇒ Quickly and calmly handles clean up of any spills of paint, water, or other Wet and Dry supplies.
- ⇒ Uses broom carefully
- ⇒ Requests mop if necessary and mops area



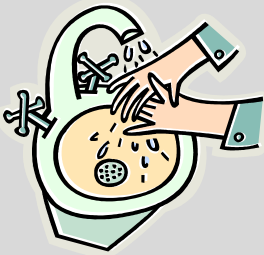
Recycling Chief

- ⇒ Takes out recycling bin when full
- ⇒ Reminds students to recycle
- ⇒ Does not wander to places that are not part of the errand.
- ⇒ Works quickly to avoid missing class time.



Nurse Buddy

- ⇒ Helps injured or sick student
- ⇒ Only goes if students request assistance and teacher feels it is necessary



Sink Spotter

- ⇒ Checks all 3 sinks at the end of each studio day to ensure that no mess have been left
- ⇒ Cleans and properly puts away anything that was abandoned in a sink
- ⇒ Notifies teacher of sink back-ups or problems
- ⇒ Washes inside of sink and wipes away water and mess from counters around sink
- ⇒ Replaces paper towels when needed



Safety Leader

- ⇒ Shuts blinds for a lock-down
- ⇒ Line leader for evacuations
- ⇒ Check stock of Band-Aids and reports to teacher when low.